

**CDC25C Antibody (monoclonal) (M01)****Mouse monoclonal antibody raised against a partial recombinant CDC25C.****Catalog # AT1458a****Specification**

---

**CDC25C Antibody (monoclonal) (M01) - Product Information**

Application	WB, IHC, IP, E
Primary Accession	<a href="#">P30307</a>
Other Accession	<a href="#">BC019089</a>
Reactivity	Human
Host	Mouse
Clonality	Monoclonal
Isotype	IgG1 Kappa
Calculated MW	53365

**CDC25C Antibody (monoclonal) (M01) - Additional Information****Gene ID** 995**Other Names**

M-phase inducer phosphatase 3, Dual specificity phosphatase Cdc25C, CDC25C

**Target/Specificity**

CDC25C (AAH19089, 21 a.a. ~ 130 a.a) partial recombinant protein with GST tag. MW of the GST tag alone is 26 KDa.

**Dilution**

WB~~1:500~1000

IHC~~1:100~500

IP~~N/A

E~~N/A

**Format**

Clear, colorless solution in phosphate buffered saline, pH 7.2 .

**Storage**

Store at -20°C or lower. Aliquot to avoid repeated freezing and thawing.

**Precautions**

CDC25C Antibody (monoclonal) (M01) is for research use only and not for use in diagnostic or therapeutic procedures.

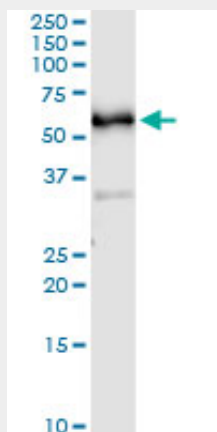
**CDC25C Antibody (monoclonal) (M01) - Protocols**

Provided below are standard protocols that you may find useful for product applications.

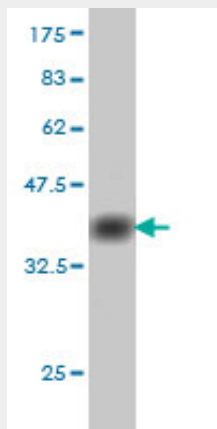
- [Western Blot](#)

- [Blocking Peptides](#)
- [Dot Blot](#)
- [Immunohistochemistry](#)
- [Immunofluorescence](#)
- [Immunoprecipitation](#)
- [Flow Cytometry](#)
- [Cell Culture](#)

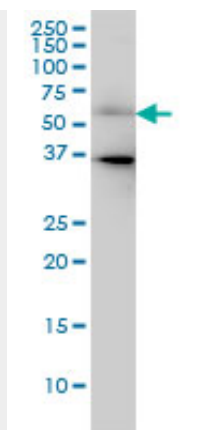
#### CDC25C Antibody (monoclonal) (M01) - Images



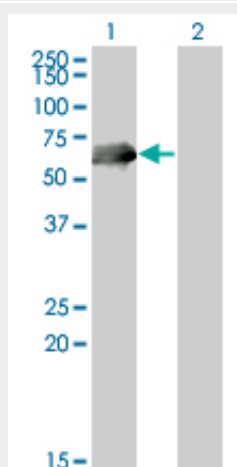
Immunoprecipitation of CDC25C transfected lysate using anti-CDC25C monoclonal antibody and Protein A Magnetic Bead ([U0007](#)), and immunoblotted with CDC25C MaxPab rabbit polyclonal antibody.



Antibody Reactive Against Recombinant Protein. Western Blot detection against Immunogen (37.73 KDa) .



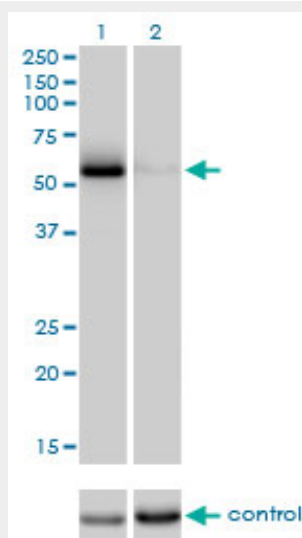
CDC25C monoclonal antibody (M01), clone 3B11 Western Blot analysis of CDC25C expression in HeLa (Cat # AT1458a)



Western Blot analysis of CDC25C expression in transfected 293T cell line by CDC25C monoclonal antibody (M01), clone 3B11.

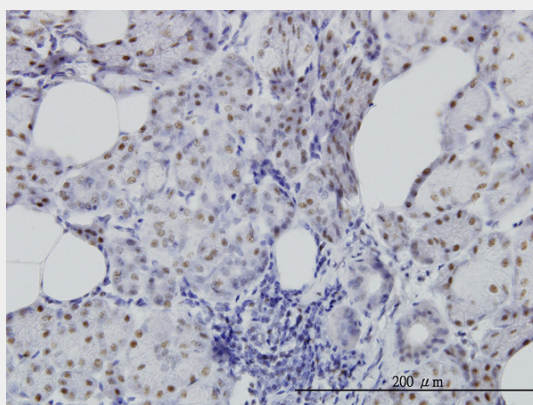
Lane 1: CDC25C transfected lysate(53.312 KDa).

Lane 2: Non-transfected lysate.

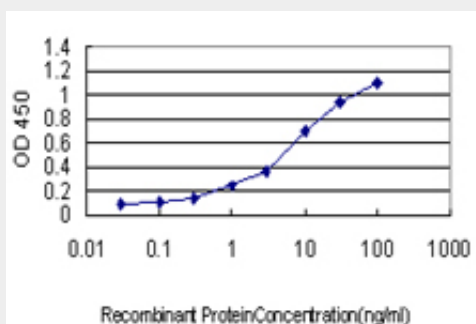


Western blot analysis of CDC25C over-expressed 293 cell line, cotransfected with CDC25C

#### Validated Chimera RNAi ( (Cat # AT1458a )



Immunoperoxidase of monoclonal antibody to CDC25C on formalin-fixed paraffin-embedded human salivary gland. [antibody concentration 6 ug/ml]



Detection limit for recombinant GST tagged CDC25C is approximately 0.1ng/ml as a capture antibody.

#### **CDC25C Antibody (monoclonal) (M01) - Background**

This gene is highly conserved during evolution and it plays a key role in the regulation of cell division. The encoded protein is a tyrosine phosphatase and belongs to the Cdc25 phosphatase family. It directs dephosphorylation of cyclin B-bound CDC2 and triggers entry into mitosis. It is also thought to suppress p53-induced growth arrest. Multiple alternatively spliced transcript variants of this gene have been described, however, the full-length nature of many of them is not known.

#### **CDC25C Antibody (monoclonal) (M01) - References**

Centrosome-related genes, genetic variation, and risk of breast cancer. Olson JE, et al. Breast Cancer Res Treat, 2010 May 28. PMID 20508983. Overexpression of CDC25B, CDC25C and phospho-CDC25C (Ser216) in vulvar squamous cell carcinomas are associated with malignant features and aggressive cancer phenotypes. Wang Z, et al. BMC Cancer, 2010 May 25. PMID 20500813. A Large-scale genetic association study of esophageal adenocarcinoma risk. Liu CY, et al. Carcinogenesis, 2010 Jul. PMID 20453000. Cdc25 phosphatases are required for timely assembly of CDK1-cyclin B at the G2/M transition. Timofeev O, et al. J Biol Chem, 2010 May 28. PMID 20360007. Adventitious arsenate reductase activity of the catalytic domain of the human Cdc25B and Cdc25C phosphatases. Bhattacharjee H, et al. Biochemistry, 2010 Feb 2. PMID 20025242.